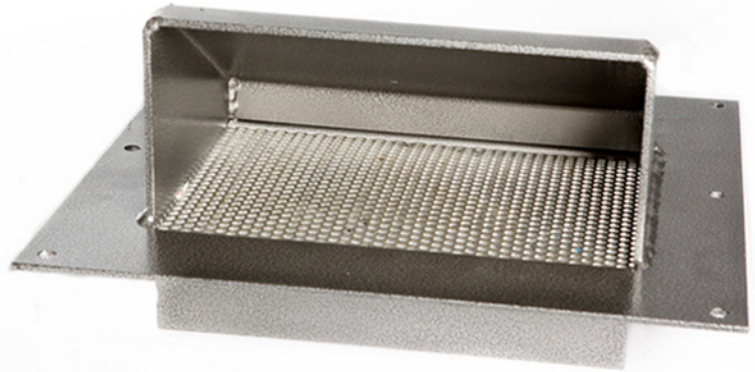
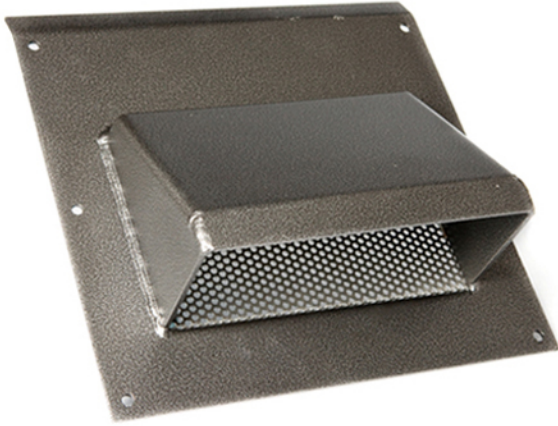




Insta Vent (6067) Product Sheet



Specs:

- 13 gage steel construction
- 14" x 14" x 9"
- 6" x 9" screen opening
- 8.5 lbs / 4kg
- Powder coated grey

Features:

- Tapered in flange to prevent seepage from top
- Easy to install in under 30 minutes
- Bug screen included
- Super strong to avoid damage from impacts

6067 Insta Vent Description:

This Insta Vent with screen is easy to install within 30 minutes. Vent comes powder coated and requires no welding or painting. This unit comes complete with screen to prevent any rodents or insects from entering containers, plus providing great ventilation.

***Warning** - All products that require installation or fabrication should never be done until you have the product in hand to take exact measurements. While every attempt is made to make sure product specifications are accurate in these pages, there is the possibility the products have been updated or a small variance between production has made the measurement off from what's in this book. Installation of our products may require some fabrication experience, and in no way does warranty cover installation mistakes.